



Czech International Karviná 2017

Part of the Badminton Europe Circuit 2016/2017
Future Series Tournament

17th MAY – 20th MAY 2017

ORGANISER	Kabal team Karviná, z.s. and Czech Badminton Association
OFFICIAL PHONE	+420 732 846 293 (English-speaking) +420 725 569 956
TOURNAMENT DIRECTOR	Radim Slíva mmcr@kabalteam.cz
REFEREE	Jeroen Hubregsen, BEL referee.hubregsen@gmail.com
DEPUTY REFEREE	Mr. Ivan Skacha ivan.skacha@volny.cz
VENUE	Sportovní hala STaRS Karviná, s.r.o. Karola Sliwki 783/2a, 733 01 Karviná-Fryštát, Czech Republic, GPS 49°51'18.811"N, 18°32'18.576"E www.stars-karvina.cz
WEB SITE	www.kabalteam.cz/mmcr



EVENTS

Men's and women's singles, men's and women's doubles, and mixed doubles

The Championships will comprise of the following number of entries in the main tournament:

Men's Singles (MS) 32

Women's Singles (WS) 32

Men's Doubles (MD) 32

Women's Doubles (WD) 32

Mixed Doubles (XD) 32

The number of players in/from the qualification is subject to the final number of entries. Minimum number of entries: It is required that every event in a particular BEC Circuit tournament has at least 8 competitors. If the required number of competitors is not met, this particular event shall not count towards any ranking.

COURTS

5 courts Pro court

SHUTTLES

V.I.P FZ Forza

PROVISIONAL SCHEDULE

Wednesday MAY 17 th	09:00 Qualification 1 st +2 nd Round
Thursday MAY 18 th	09:00 Qualification 3 rd Round 12:30 Maindraw 1 st Round
Friday MAY 19 th	10:00 Maindraw 2 nd Round 17:00 Quarterfinals
Saturday MAY 20 th	09:00 Semifinals 16:00 Finals

DRAW

The Draw will be made by Badminton Europe

ENTRIES

All entries must be made through BWF Online Entry System <https://goo.gl/kuCwVP>

Entries must be submitted no later than 18th April 2017 at 23:59 BWF HQ time (17:59 CET)

Players can not be entered unless they already have a BWF ID-number. In case you wish to enter players who do not have a BWF ID-number, please contact the BWF office well in advance of the tournament, so that the players concerned can get a BWF ID-number before the closing date of the tournament.

No late entries will be accepted.

Organizers are allowed to refuse entries if players have outstanding fees of a previous year.

ELIGIBILITY

Participation in the Czech international Karviná 2017 is open to members of any National Association recognized by the BWF and any currently registered member of the Badminton Czech Republic.

Following entries are not acceptable:

1. received after the closing date
2. made on an individual basis

ENTRY FEES

EUR 35,- in singles and EUR 55,- per pair in doubles

PAYMENT

The Member Association that enters a player into a Circuit tournament is responsible for paying the entry fees for the player. The entry fees become due if a player is entered and has not been withdrawn by the Member Association by midnight local time on the closing date. It is recommended that the entry fees are paid by bank transfer. If the entry fee is not paid in time, the player will not be allowed to start the match.

The entry fees will not be refunded in the case of a withdrawal. For all the withdrawn players the Organizers can invoice the entry fee to the relevant Member Association. If no payment has been received after the deadline has passed the organizers will forward the invoice with the registration of deliverance and the copy of the original entry together with the original invoice to BADMINTON EUROPE.

If a player/pair is listed on a "Waiting List", no entry fee is to be paid before being promoted to the Main Draw or Qualification draw. Before such a promotion takes place, the organizers must have this promotion confirmed by the association/associations of the respective player/pair. Only when this confirmation has been given, the player/pair is considered as an entry.

Organizers are allowed to refuse entries if players have outstanding fees from a previous year.

No alteration, except withdrawal, can be made to the entries after the close of entries in accordance with BWF Competition Regulations 17.1.

VISA

If you need Visa please ask the Czech Badminton

Federation badminton@cusc.cz for the official invitation letter. It is advised to arrange the Visa in time.

BANK DETAILS

ORGANIZER: Kabal team Karviná, z.s.
Cihelní 2400/20, 735 06, Karviná
BANK: FIO banka, a.s., v Celnici 1028/10,
117 21 Praha 1
Account no. 2500286235/ (Bank code) 2010
BIC: FIOBCZPPXXX
IBAN: CZ4420100000002500286235
SWIFT: FIOBCZPP

WITHDRAWALS Please ensure that the organizer will be informed immediately when a player has to withdraw, together with the reason.

Attention: Any withdrawal after the Sunday immediately preceding the draw, for any reason whatsoever, renders the Member Association concerned liable to an amount of US\$ 150,00 for the inconvenience caused by the withdrawal (as defined in BWF General Competition Regulations).

Any player not showing up at the tournament, without having been withdrawn in advance, renders the Member Association concerned liable to an additional amount of US\$ 500,00 for the inconvenience caused by the "no show".

PRIZE MONEY € 3000,-

Player's prize money will be taxed with 15% according to the Czech tax law and paid out in EUR

The Organizer shall pay the prize money cash during the closing ceremony. The prize money will be awarded only to those players who attend the closing ceremony.

	MS	WS	MD	WD	XD
Winner	€ 450	€ 450	€ 700*	€ 700*	€ 700*

**= per pair*

CEREMONIES Players are not allowed to wear hats or caps during the presentation ceremonies. Rackets may not be carried during presentations. Tracksuits, or clothing as worn

during play, will be allowed. No other form of advertising will be permitted. This regulation will be strictly enforced by our stewards prior to each ceremony.

CONDITIONS OF PLAY

The Tournament will be conducted under the BWF Competition Regulations and in accordance with Instructions of the Badminton Europe Circuit, of which the Tournament forms a part.

Players shall not plan their departure less than two (2) hours after their last match is planned to conclude. If a player is unable to compete due to early departure, he/she may be penalized by removal of ranking points and return of awarded prizes. BADMINTON EUROPE shall propose to BWF that the gained BWF ranking points are also removed.

ADVERTISING & CLOTHING

The Tournament will be conducted according to the BWF Regulations 19-23 on advertising and clothing.

For The name on the back of the shirts is mandatory for all matches at all times during play in both the qualification and the main draw.

A player failing to wear the name on the back of his/her shirt when mandatory shall be penalised by an administrative fine of 100,00EUR.

It is mandatory - that partners in doubles wear the same colour of the T-shirt and shorts/skirts at all time during play in both the qualification and the main draw. Failing to do so shall result in an administrative fine of 100,00 EUR.

BETTING

There can be betting on offer from this event. Betting is however not allowed to be made by players or officials connected to the event either in person or through a third party. Participants may therefore not make bets on the Event or procure through third parties the making of bets with a betting agency. Participants who, in violation of this prohibition, nevertheless make or procure through third parties the making of bets with betting agencies shall be immediately disqualified from participation in the Event and are liable for legal prosecution. Similarly manipulation of games will be met with disqualification and possible legal prosecution. Any violation mentioned above is also a breach of Player's Code of Conduct (Art. 5.2.) and will be sanctioned by BWF.

INSURANCE

To be arranged individually by participants. During the

tournament a doctor will be present in the hall.

DOPING CONTROL

Doping tests can be executed.

KEY DATES

Entries deadline: 18th April 2017
World Ranking date for M&Q-report: 20th APRIL 2017
Date for publication of M&Q-report: 21st APRIL 2017
World Ranking date for seeding/draw: 27th APRIL 2017
Last day for Withdrawal without Penalty: 30th APRIL 2017
Date for the draw: 2nd MAY 2017

MEDIA

All journalists who want to visit the tournament must ask in advance for accreditation by MAY 1st 2017
e-mail: mmcr@kabalteam.cz

BADGES

Entry to the arena for players and officials will be controlled by colour coded name badges. Badges will be issued to all nominated players on arrival to the venue.

TRAVEL

Competitors from abroad are requested to inform the transport manager at mmcr@kabalteam.cz of **time** of arrival, **flight no.**, etc. before arrival, according to the enclosed information.

Transportation (pick up): Will be provided as a courtesy from Leos Janacek Airport Ostrava to the official hotels only.

SHUTTLE TRANSPORT

Transport between the venue and the official tournament hotels will be arranged. The shuttle bus will run according to a time schedule.

LUNCH AND DINNER

It will be possible to buy lunch and dinner in the restaurants of the official hotels. A small snack-bar will be opened in the hall for players and visitors.

HOTELS

Accommodation in the official hotels must be booked **no later than MAY 07th 2017**. Accommodation must be booked by email to mmcr@kabalteam.cz Please note that there is a limited capacity within each hotel and reservations will be handled on the basis of first come, first served. Your booking email will be answered with information about hotel payment.

ACCOMMODATION

Hotel SPORT***, Karviná

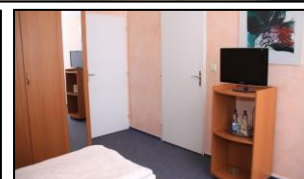
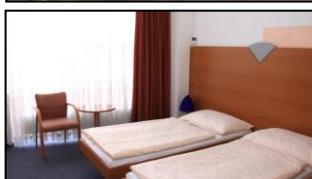
Hotel Sport
Karola Šliwky 783/2a
733 01 Karviná-Fryštát

3-star hotel, distance from venue approx. 0 km (directly connected to the sports hall)

single room	65,-€
double room	75,-€
triple room	80,-€

Prices include breakfast.

BOOKING: mmcr@kabalteam.cz



Penzion Jelen***, Karviná

Penzion Jelen
Zámecká 1942/7a
733 01 Karviná – Fryštát

3-star hotel, distance from venue approx. 0,5 km

single room	65,-€
double room	75,-€

Prices include breakfast.

BOOKING: mmcr@kabalteam.cz



Zámeček Petrovice ****, Petrovice u Karviné

Zámeček Petrovice,
Prstná čp.1, Petrovice u Karviné, 73572

4-star hotel, distance from venue
approx. 6 km (free shuttle bus will be
provided)

single room	75,-€
double room	85,-€

Prices include breakfast and spa.

BOOKING: mmcr@kabalteam.cz

